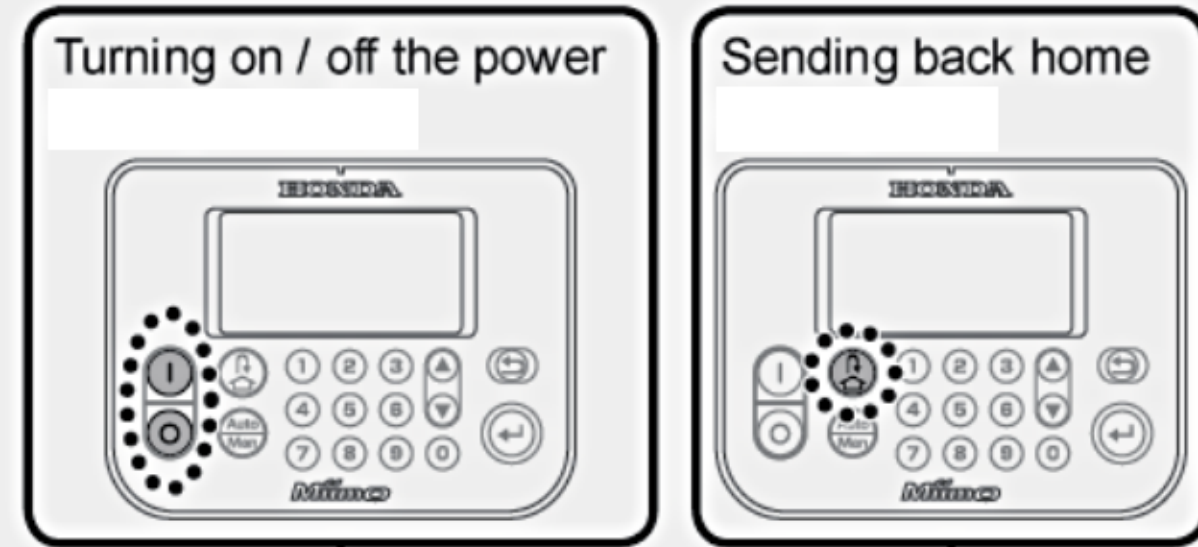


QUICK GUIDE

Fundamentals



Stopping the lawnmower



Mii-monitor
Refer to the Mii-monitor Operation Guide.

<https://www.hondapps.com/link/OM00231HME/>

Operate within a distance of about 3 m from the lawnmower.

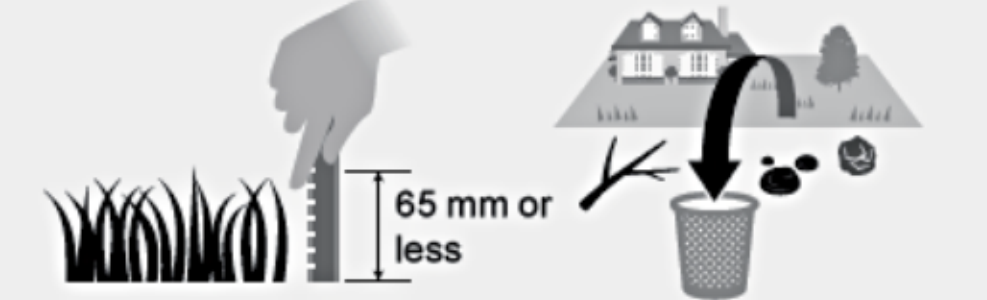
Daily use

- 1** Menu settings
- 2** Check the garden



Configure the operation mode, timer, and other settings.

- Work settings for the garden
 - Mowing start point settings
 - Narrow passage settings
 - Mowing pattern settings
- Timer settings
- Useful settings
- Operation checks
- Setup wizard
- Mii-monitor



Maintain the area before the lawnmower starts mowing.

- Checking the garden
- Removing foreign objects from the area

Technical tips

Mowing mode
You can select from 2 modes of operation (available in "Menu Settings").

- **Auto mode**
The lawnmower automatically mows according to inputted time and garden settings.
- **Manual mode**
Start mowing anytime without timer settings.

Cleaning the lawnmower
Clean dirt and grass off of the lawnmower using a plastic brush and cloth.

Remove dirt and grass from the following areas:

NOTE:

- Never use a scraper. It may caused damage (tears, scratches, etc) to the rubber boots on the underside of the lawnmower.
- Do not wash the docking station with water. The docking station may be damaged.

- 3** Paused
- 4** Weekly check
- 5** Storage



Put on "Paused" state for work so you can start operation at your desired time.

- Setting the height of the blades
- Checking the "Paused" state
- Checking the docking station connections



Regularly check the lawnmower for assurance.

- Checking the standby status
- Checking the docking station connections
- Blade conditions
- Checking the parts



Store properly for next use.

- Cleaning and replacing the blades
- Cleaning the lawnmower
- Cleaning the docking station
- Disconnecting the AC adapter and power cable